

**Kingdom of Cambodia – Royaume du Cambodge
1952**

01Feb1952

**First Issue
National Postage Stamps
(second series)**

**PHNOMPENH R.P.
CAMBODGE**

A



**Kingdom of Cambodia
1-2-1952
First Issue of National
Postage Stamps**

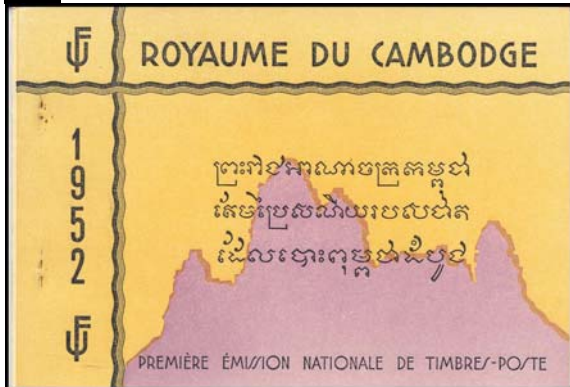
(J. Desrousseaux type N-3)

FDA



Reference: ICP Vol. III, No. 4, page 11

SBA



(contains three sheets of single perforated stamps – the \$5, \$10, and \$15)

SSA

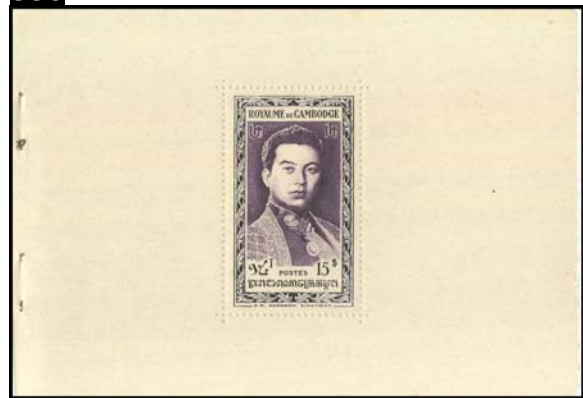


Reference: ICP, Vol. VII, No. 2, page 10

SSB



SSC



Kingdom of Cambodia – Royaume du Cambodge
1952

MCA



MCB



01Feb1952

First Issue
National Postage Stamps
(second series)

KOMPONG CHAM
CAMBODGE

A

FDB



Kingdom of Cambodia – Royaume du Cambodge
1952

20Oct1952

Surcharge for "Student Aid"
(semi-postal)

PHNOMPENH R.P.
CAMBODGE



FDA

